

The Tipi

Explore the center of family life for many Plains tribes...the tipi. A durable and versatile structure and a spiritual

symbol, the tipi is still used today. Learn about customs, construction, designs, and interiors of these unique lodges.

This exhibit has 15 free-standing door panels with interpretative text and graphics along with a real canvas tipi! This exhibit must be picked up as it can not be shipped.

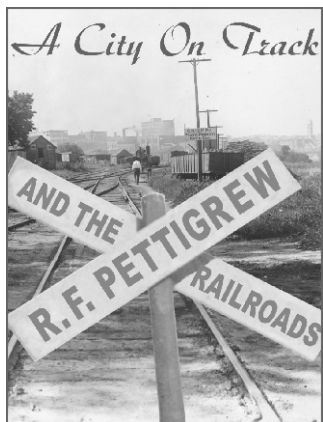
A City on Track:

R.F. Pettigrew and the Railroads

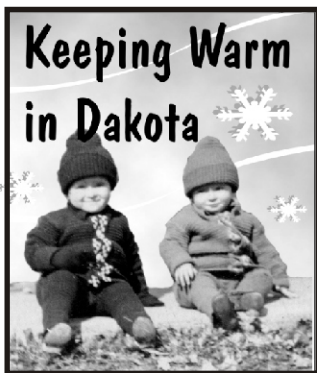
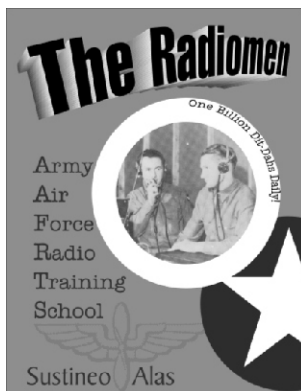
Sioux Falls residents realized as early as 1873 that their town needed railroad connections if it was to prosper. Persuading multiple railroads to lay down track to a single town identified that community as a leader in its region. Richard Franklin Pettigrew and his contemporaries had the foresight to bring several railroads to Sioux Falls, which doubtless contributed to its

successful development. By 1888 Sioux Falls could boast five independent railroad lines, and others followed soon after.

This exhibit has 15 framed panels and 15 graphic boards of varying sizes.



The Radiomen
With the United States' involvement in World War II there was a high demand for trained personnel. The Radio Training School in Sioux Falls was one of two new bases built to instruct soldiers in radio theory and practice. Starting in 1942 and operating until 1945, the base trained over 25,000 students. The base had quite an impact on Sioux Falls. During its operation there were thousands of student-soldiers and their families in the city, which put a strain on the housing and resources of Sioux Falls. The base brought in people who would have never heard of the city and after the war many of those servicemen and their families moved back to Sioux Falls. The buildings of the base also found a new life after the war, becoming apartments, classrooms, and businesses. This exhibit has eight framed panels.



Keeping Warm in Dakota

Living in extreme conditions calls for extreme actions to keep warm. This exhibit keeps its thinking cap on to understand how to keep warm with what we wore, what we built to live in, and what we used for heat

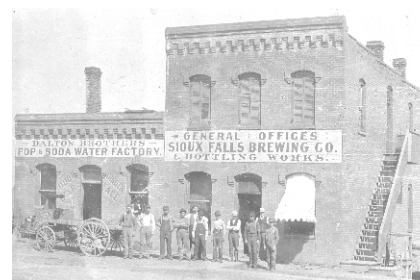
throughout the years. There are 19 framed interpretative panels filled with historic photos.



Beer: Brewed, Bottled, & Banned

Bier, la cerveza, biere, la birra, or beer—any way you say it, it's all the same. While the process of brewing has changed over the years through the advancement of science, the main ingredients used to make beer—hops, barley, yeast, and water—remain the same. The creation of beer can be traced back to the ancient world through Mesopotamian recipes recorded on clay tablets. In the United States, breweries began popping up all over the country as communities grew, and South Dakota was no different. Throughout time, beer has been a subject of interest, both good and bad, with much discussion concerning prohibition, age limits, and taste preferences.

This exhibit has 20 framed panels but can also be broken down into different categories, including general brewing history, Eastern South Dakota breweries, and Prohibition in South Dakota.

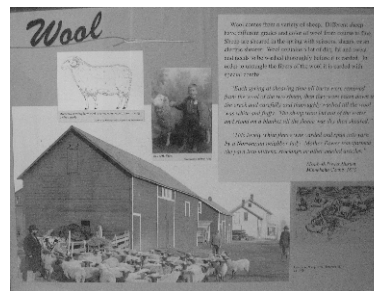


Textiles

Textiles

This 10-panel thematic exhibit has great information on textiles and how they were used. Utilize the framed panels to

compliment your existing collection, perhaps exhibiting pieces from a different perspective.



Traveling History

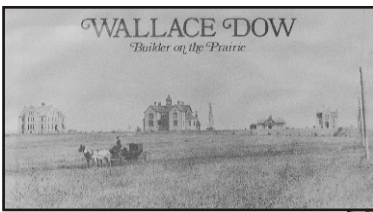
The Siouxland Heritage Museums' traveling exhibits are available to other museums, organizations, clubs, schools, churches, and businesses within South Dakota or beyond.

Each exhibit rents for \$50/month, \$25/month for Minnehaha County organizations, with a two month minimum. All loan periods are negotiable, and are booked on a first-come basis. The Borrowing Organization is responsible for all shipping or transportation costs as well as a refundable damage deposit. A more detailed description of the exhibit components and space requirements are available upon request.

For more information, contact the Exhibits Department at the Old Courthouse Museum.

Phone: 605-367-4210
 Fax: 605-367-6004
 email: museum@minnehahacounty.org
 Address: 200 W. 6th St.
 Sioux Falls, SD 57104

www.siouxlandmuseums.com



Wallace Dow: Builder on the Prairie



The creativity of an early architect stands all around us, even approximately 100 years after his death. Wallace Dow designed many of Dakota Territory's government buildings, schools, businesses and homes. This exhibit captures the details of Dow's work through photography in 30 framed panels.

Some of the towns where his work is found include Dell Rapids, Brookings, Vermillion, Yankton, Madison, Watertown, Plankinton, Flandreau, Huron, Springfield, Mission, Canton and Sioux Falls in South Dakota; and also Bismark, ND, Pipestone, MN, and Chicago, IL.

County Towns

County Towns

Explore the towns in Minnehaha County and learn how they were established in this 11-panel exhibit. Featured towns include: Baltic, Brandon, Colton, Crooks, Dell Rapids, Garretson, Hartford, Humboldt, Sherman, Sioux Falls, and Valley Springs.



It's a Hit! Baseball in Minnehaha County

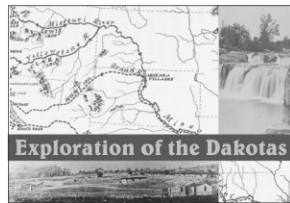
This exhibit

explores one county's baseball history. Baseball teams throughout this region were made up of players whose aims and experiences varied. Some teams consisted solely of farmers and local men who played just for fun, others were company-sponsored teams who wore formal uniforms and competed against one another annually at the amateur level. In 1885, the first independent, all-salaried, professional baseball team came to Sioux Falls. From city teams and company-sponsored teams to Army Air Force ball and professional leagues, numerous baseball organizations have been hosted by the county over the past century.

The exhibit can be broken down into categories that promote your area of interest, so the number of panels can vary. Hands-on historic equipment including bats, balls, and bases may also be available. This exhibit must be picked up as it is difficult to ship.

Exploration of the Dakotas

This exhibit examines two types of explorers: men who investigated the new territory as part of military campaigns, and those who documented the land through their artistic interpretations. Looking at a time period from 1804-1874, military explorers include James Allen, Meriwether Lewis & William Clark, Joseph Nicolle and John C. Fremont, William S. Harney, Alfred Sully, Lt. Gouverneur K. Warren, and George Custer, while artist explorers include John James Audubon, Karl Bodmer & Prince Maximilian zu Weid, and George Catlin. The exhibit includes 11 framed panels. A map activity is available through the museum website.



200 West Sixth Street
Sioux Falls, SD 57104

SIouxLAND
HERITAGE
MUSEUMS



*The Siouxland
Heritage Museums*

**Bring an exhibit to
your community today!**

